

Pack TYXAL+ Access

www.deltadore.com

Pre-configured wireless 2-zone alarm pack



Quick installation guide

Thank you for purchasing this DELTA DORE alarm pack.

This quick installation guide provides you with the basic installation instructions for your products.
Refer to the system guide for an advanced installation of your Pack.

- The Pack TYXAL+ Access comprises:
- 1 CS 2000 TYXAL+ siren control unit,
 - 2 TL 2000 TYXAL+ remote controls,
 - 1 DMB TYXAL+ motion detectors,
 - 1 door/window magnetic contact DO TYXAL+,
 - 1 CLT 8000 TYXAL+ touch screen keypad



Siren control unit
The control unit is the heart of the system and manages all the information exchanged between products.
It sets off the indoor siren in the event of an alarm.



Door/window magnetic contact
When installed on an opening, (door or window), they report any intrusion to the control unit.



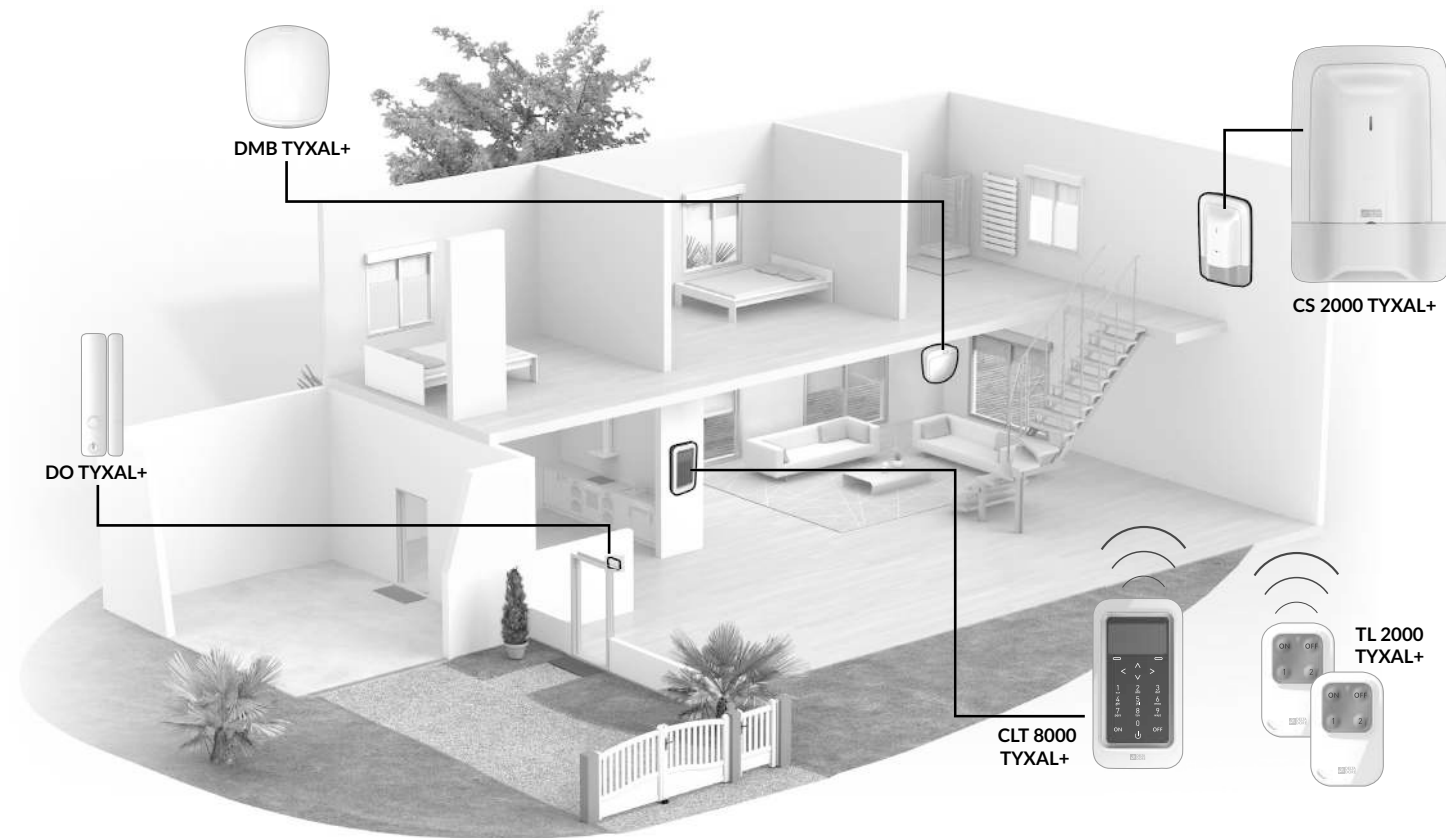
4-button remote controls
These enable the system to be activated or deactivated totally or by zone.
Two buttons (1 and 2) can be configured for control of the alarm by zone, the triggering of a discreet or audible emergency alarm or control of control systems (e.g. garage door).



Motion detectors
Wall-mounted, they detect any person moving in the room where they are installed and report this to the control unit.
The “standard” lens can be replaced with an “animal” lens (supplied with the product).



Touch screen keypad
It is an essential component and is used for all the control actions of the installation.
With its access code, it enables the system to be activated or deactivated totally or by zone. Wall-mounted, it informs you of the system’s status.
It reads the last events occurring, shows the indoor (measured by the keypad) and outdoor temperature (if an outdoor siren is associated with the control unit) and is used to personalise the system.



Activation: main steps

The products in the Pack TYXAL+ Access were associated in the factory so as to make them easier to install.

1 Installing and mounting the products

- starting with:
- the CS 2000 TYXAL+ siren control unit
 - the CLT 8000 TYXAL+ touch screen keypad
 - the DMB TYXAL+ motion detectors
 - 1 door/window magnetic contact DO TYXAL+,
- The TL 2000 TYXAL+ remote controls can be programmed (functions of buttons 1 and 2) and associated with the control of control systems

2 Close the alarm control unit

3 Create installer and user access codes

⚠ You must create your own codes (123456 on activation).

4 Adding additional products (if necessary)

- Products that are not part of the Pack TYXAL+ Access must be associated with the system:
- connected home hub TYDOM 1.0, ...
 - intruder detectors and technical detectors,
 - keypad, badge reader, remote controls, etc.,
 - indoor or outdoor siren, telephone transmitter, etc.,
- To do this, refer to the “Adding products” chapter of the system guide.

5 Personalising the installation and products

- Naming the products
 - Managing the operating zones
 - Creating installer and user access codes. We strongly recommend that you create your own code (123456 on activation).
 - Adjusting advanced settings...
- For more detailed explanations, refer to the system guide.

6 Testing the installation

7 Overview of your installation

1 Installing and mounting the products

1.1 CS 2000 TYXAL+ control unit

• Location

The alarm control unit should be installed:

- On a flat surface, with enough space all around for installation and opening the battery cover.
- In the centre of the system and fitted in a high position to obtain the best radio link (avoid basements).
- In an open area to obtain the best dispersion of sound for the integrated siren.
- In a place difficult to locate by an intruder but easily accessed by the user.
- In an area protected by an infrared motion detector.
- At least 2 metres away from any other wireless transmitter

• Mounting

1

Separate the parts

Remove protective tab
 Unscrew
 Separate the base from the rest of the siren by pushing up and pulling toward you.
 Separate the control unit from the base.

2

Fit the mounting bracket

⚠

B = Tamper alarm on opening. Important: do not damage this part of the support (required for the tamper alarm). Screw back with care.

Mark and drill holes (A, B, C and D)
 Fit the mount (screws A and B) to the wall (do not fit screws C and D at this point).
 Fit the base back on to the mounting bracket and secure it with the screws (C and D).

3

Connect the battery unit

Lithium battery
Bloc pile 2x3.6V, LSH 20
ref. 6416222

1.2 CLT 8000 TYXAL+ touch screen keypad

• Location

It is advisable to install the touch screen keypad:

- inside,
- near one of the main entrances, if possible protected by an intrusion detector (e.g. DMB TYXAL+),
- The user must have easy access and it can be mounted on a wall at a height of 1.50 m,
- Avoid proximity with metal surfaces or an electrical switchboard.

Important: if the touch screen keypad is protected by a detector (door/window or motion), you must use a delayed triggering for the detector when activating it.

• Mounting

1

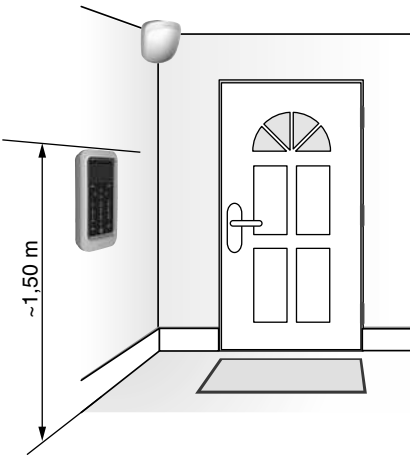
Separate the 2 parts of the unit.

2

Mark and drill holes D1, D2 and D3. Mount the base using screws V1, V2 and V3. ⚠ Do not damage or lose the rubber part (required for the tamper alarm).

3

Fit the battery unit, observing the right polarity. Close and lock the unit.



1 Installing and mounting the products

1.3 DMB TYXAL+ motion detector

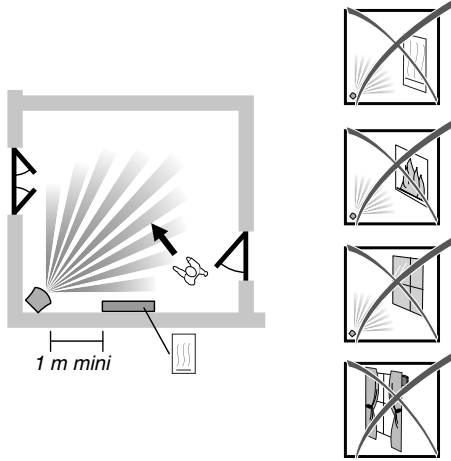
DMB TYXAL+ uses infrared (heat) to detect any moving presence in the room. It has 2 removable lenses:

- no. 1: standard (fitted on the product supplied).
- no. 2: animal immunity (does not detect animals of a certain size, or household appliances such as robot vacuum cleaners).

• Location

The motion detector must preferably be placed in a corner:

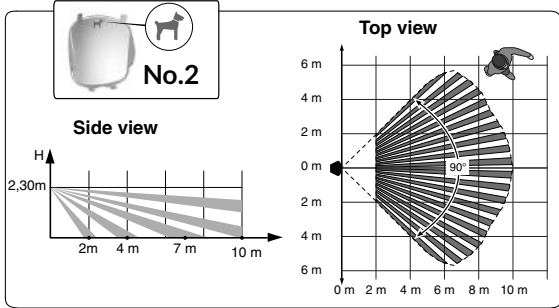
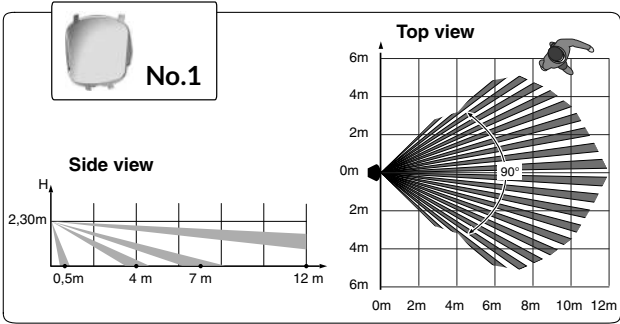
- prevent any source of heat or motion of a hot body nearby (convector, fireplace, ...),
- the field of detection must be clear of any obstacles (curtain, cupboard, etc.),
- the detector must not be pointing at an opening to the outside (window),
- you can cross the beams of 2 detectors,
- the detector must be installed between 2.20 m and 2.40 m from the floor.
For a greater height, use a RO DMB ball joint
(unless with the animal immunity lens).
- For optimum use, the room must be clear and larger than 9 m² (3 x 3).



• Field of detection/Restrictions

The difference between body temperature and room temperature can affect detection sensitivity. Detection with the standard lens is more sensitive than with the animal immunity lens.

The sensitivity can be adjusted according to three levels **A**, **B**, **C**. This enables better adaptation to various types of animals or untimely detections to be corrected (sensitivity **A** by default).



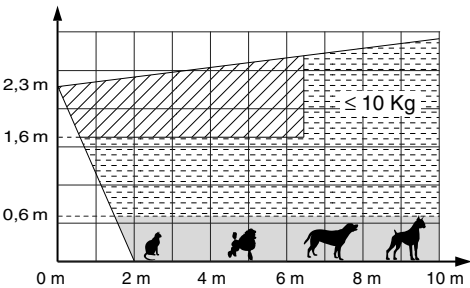
• Animal immunity



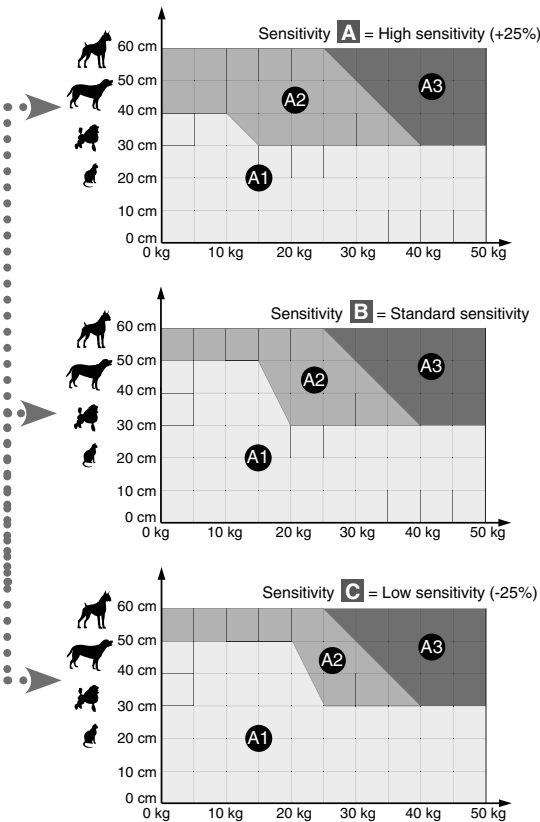
- Zone not authorised for animals
 - Zone authorised for animals ≤ than 10 kg
 - Zone authorised for animals (see details A1, A2, A3)
- If there are several animals, add their weights together.

Fur authorised zone A

	A1	A2	A3
Long coated	✓	✓	✓
Medium coated	✓	✓	-
Short coated	✓	-	-



Example 1: A French bulldog that weighs 15 kg and 30 cm in height. It is a short-haired dog that will generate detection with sensitivity **A** but not sensitivity **B** or **C**.
Example 2: A Bichon dog that weighs 10 kg and 30 cm in height generates no detection. Sensitivity **A** is recommended.

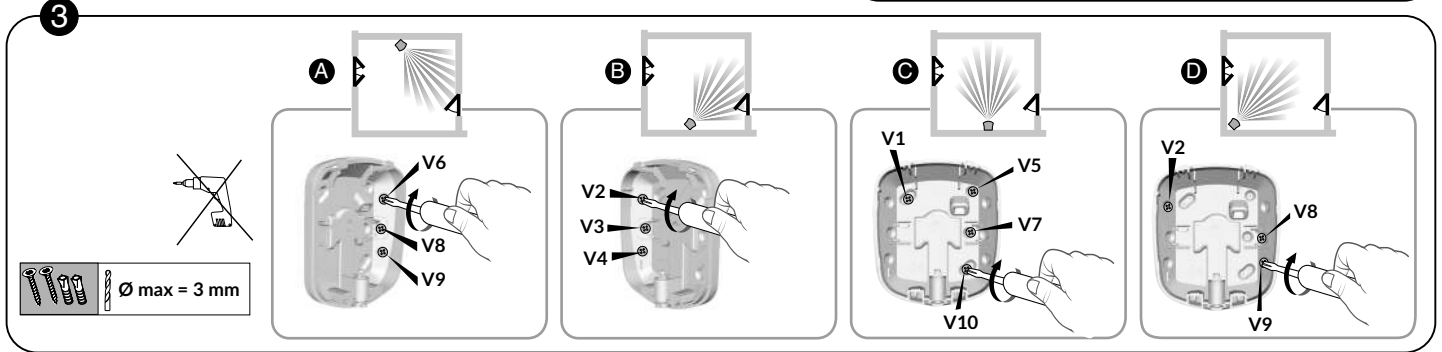
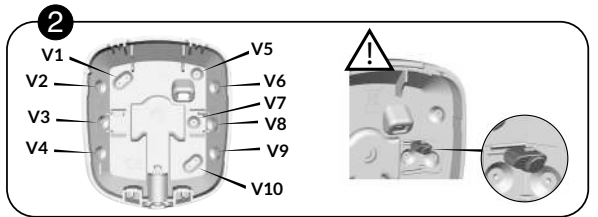
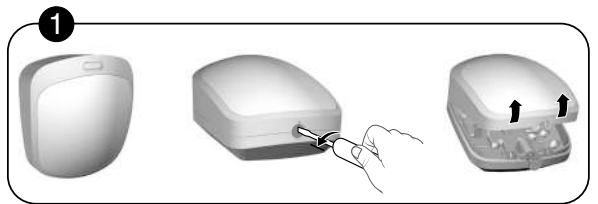


• Mounting

- 1 Open the unit.
- 2 Mark and drill the holes according to the location of the detector (see below **A**, **B**, **C** or **D**).

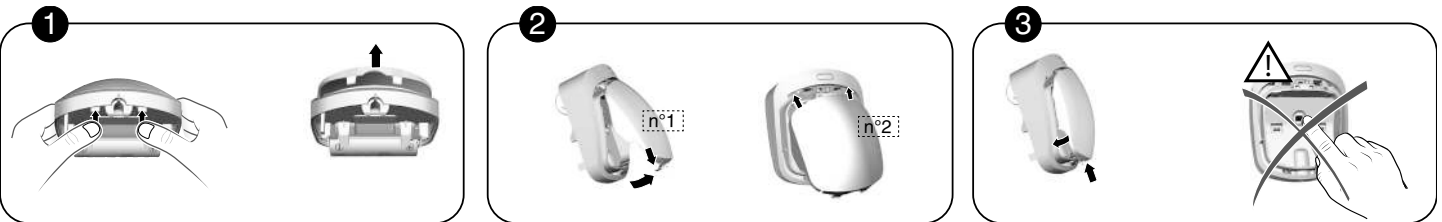
V3,V7,V8 = Tamper alarm on opening.
Important: do not damage or lose the rubber part (required for the tamper alarm).

- 3 Mount it on the wall



• Change the lens

Example: you want to replace the standard lens by the "animal" lens.

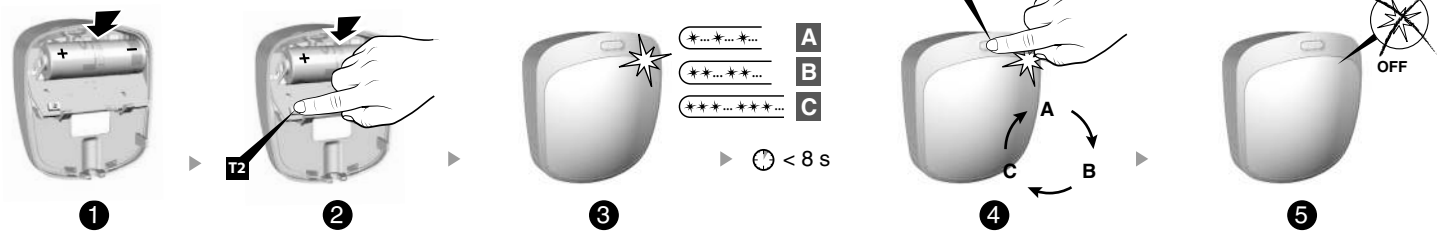


- 1 Push the stops to lift off and remove the lens.
- 2 Fit the new lens.
- 3 Be careful not to touch the sensor.

Do not use ball joint RO DMB (P/N: 6416221) with the animal immunity lens.

• Activation

Lithium Battery - AA
LS 17500 - 3,6V



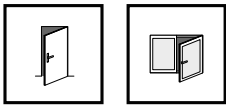
- 1 Press and hold the T2 button while inserting the battery.
- 2 Release it when the LED begins to flash.
Note: 1 flash = sensitivity **A** (by default), 2 flashes = sensitivity **B**, 3 flashes = sensitivity **C**.
- 3 Briefly press the T1 button to switch from one sensitivity to the other.
Note: The selection must be made within 8 seconds after the battery is inserted.
- 4 Wait for the LED to stop flashing. The selected sensitivity is saved.
- 5 Use a screwdriver to close the unit.

1

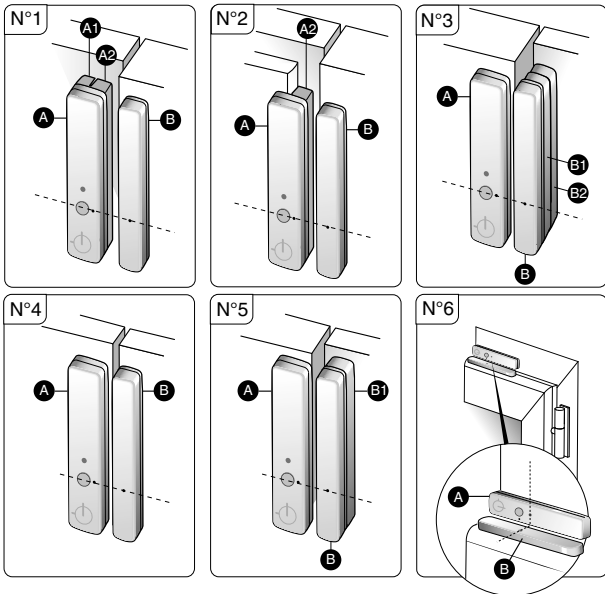
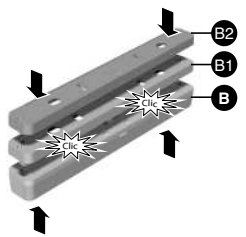
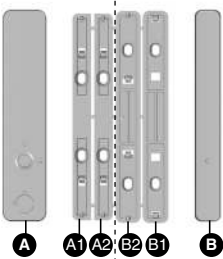
Installing and mounting the products

1.4 Door/window magnetic contact DO TYXAL+

The DO TYXAL+ Detects when a door or window is opened and reports this to the alarm control unit.

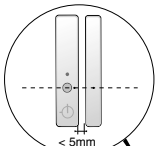


• Location

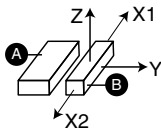


N°1 do not separate wedges A1 and A2 before assembly.
N°1 and N°2 do not trigger a tamper alarm on opening.

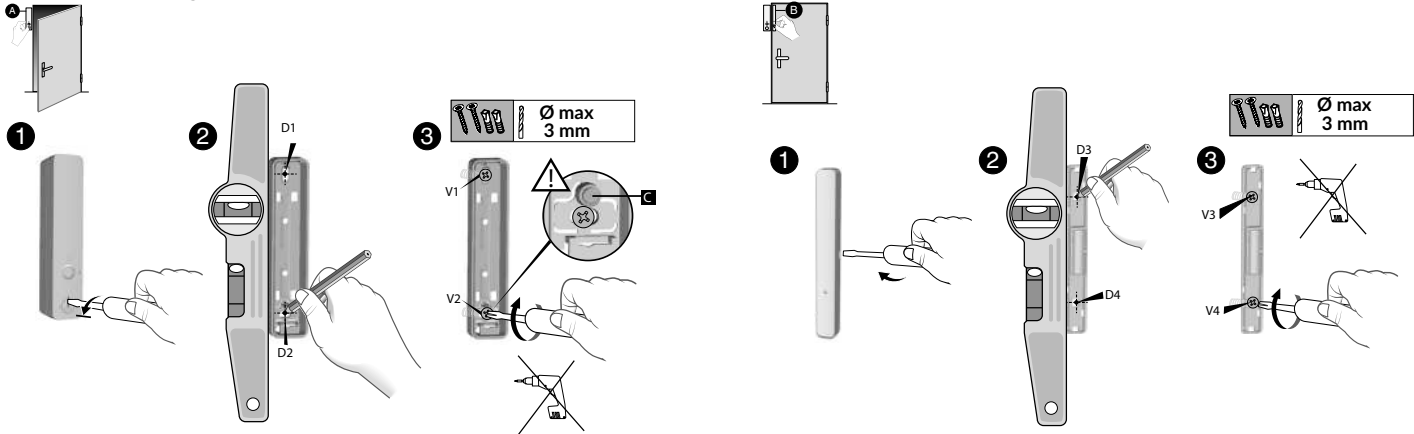
• Magnet triggering distances



X1	17mm	9	15	5
X2	17	17	15	14
Y	21	15	17	10
Z	33	24	29	20

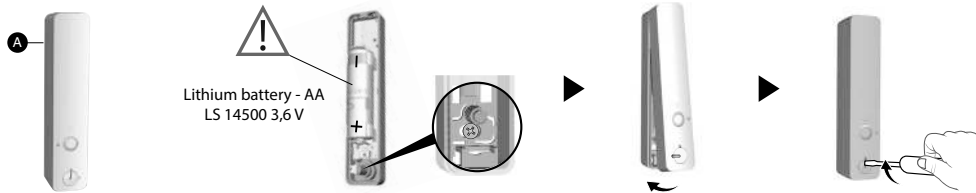


• Mounting



- 1 Separate the 2 parts of the unit.
- 2 Mark and drill holes D1, D2, D3 and D4.
- 3 Mount on the wall using screws V1, V2, V3 and V4.
- ⚠ Do not damage or lose the rubber part (required for the tamper alarm).

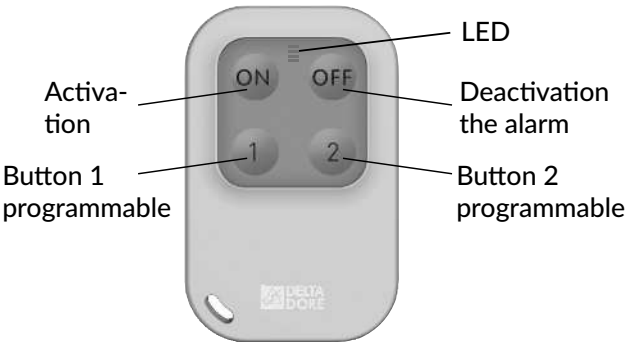
• Activation



Insert the battery, observing the right polarity.
Check that the rubber part is present before closing up the detector.

1.5 Configuring a TL 2000 TYXAL+ remote control

You can activate or deactivate the alarm system with the remote control.
Depending on the configuration defined with your installer, buttons 1 and 2 can be programmed and have different functions (see table opposite).



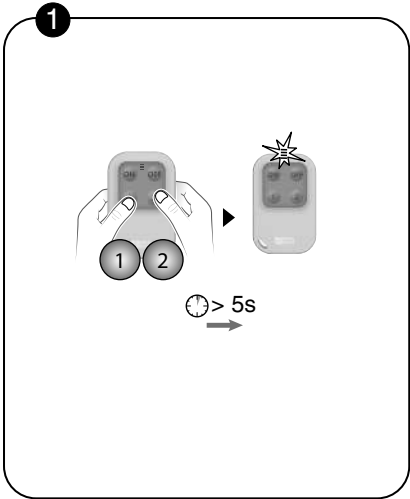
Buttons 1 and 2 can be programmed separately.
You can therefore mix the functions.
Examples:
(1 Mode A , 2 Mode C);
(1 Mode D , 2 Mode E);
(1 Mode A , 2 Mode D)...

Ask your installer for the appropriate equipment if you want openings to be controlled.

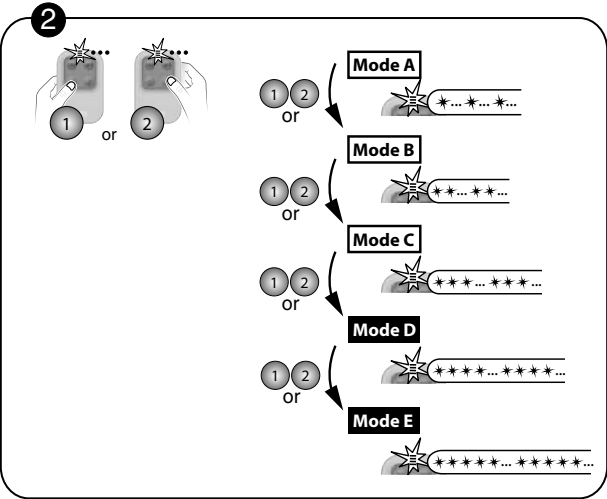
	Button 1	Button 2
Mode A	ON/OFF zone 1 (e.g. Floor)	ON/OFF zone 2 (e.g. Ground floor)
Alarm control by zone		
Mode B	Triggering of an emergency alarm with siren	Transmitter without audible signalling
Mode C	Triggering of an emergency alarm with siren	Transmitter call + audible alert
Mode D	Pulse control of a control system or lighting	
Mode E	ON/OFF control for lighting or roller shutters	

1 Installing and mounting the products

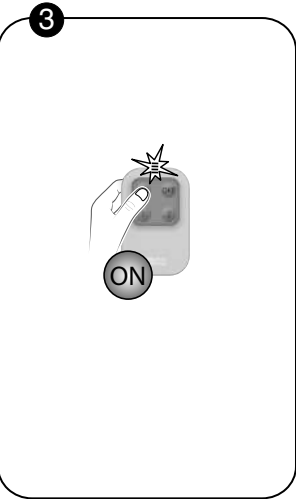
Configuring buttons 1 and 2



1 Press the 1 and 2 buttons simultaneously for 5 seconds until the LED changes to orange.

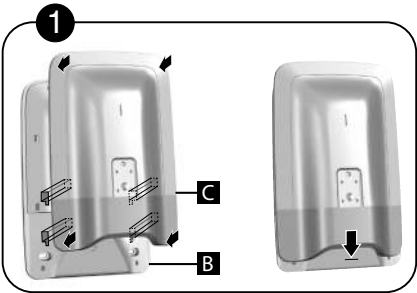


2 Press the 1 or 2 button. The LED flashes. Then, press the 1 or 2 button briefly as many times as necessary, select the required operating mode to apply: Mode A: 1 flash, Mode B: 2 flashes, ..., Mode E: 5 flashes.

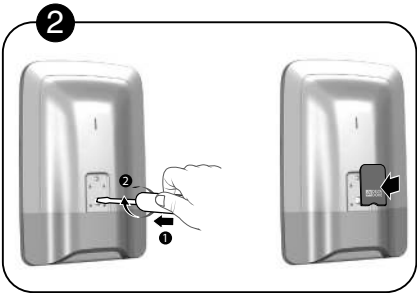


3 Press the ON button to confirm. The LED changes to green.

2 Close the alarm control unit



1 Replace the cover of the siren



2 Screw in the closing screw and replace the protective tab

3 Creating your access codes

• General

The access codes (6 digits) are recorded in the alarm control unit. You configure the access codes once with the CLT 8000 TYXAL+ touch screen keypad and the other products (keypads or transmitters) recognise these codes automatically. You do not need to configure the codes on each product.

You have:

- 1 «installer» code (123456 on activation). It is strongly recommended that you create your own code.
- 10 «user» or «restricted» codes. You must create at least one.

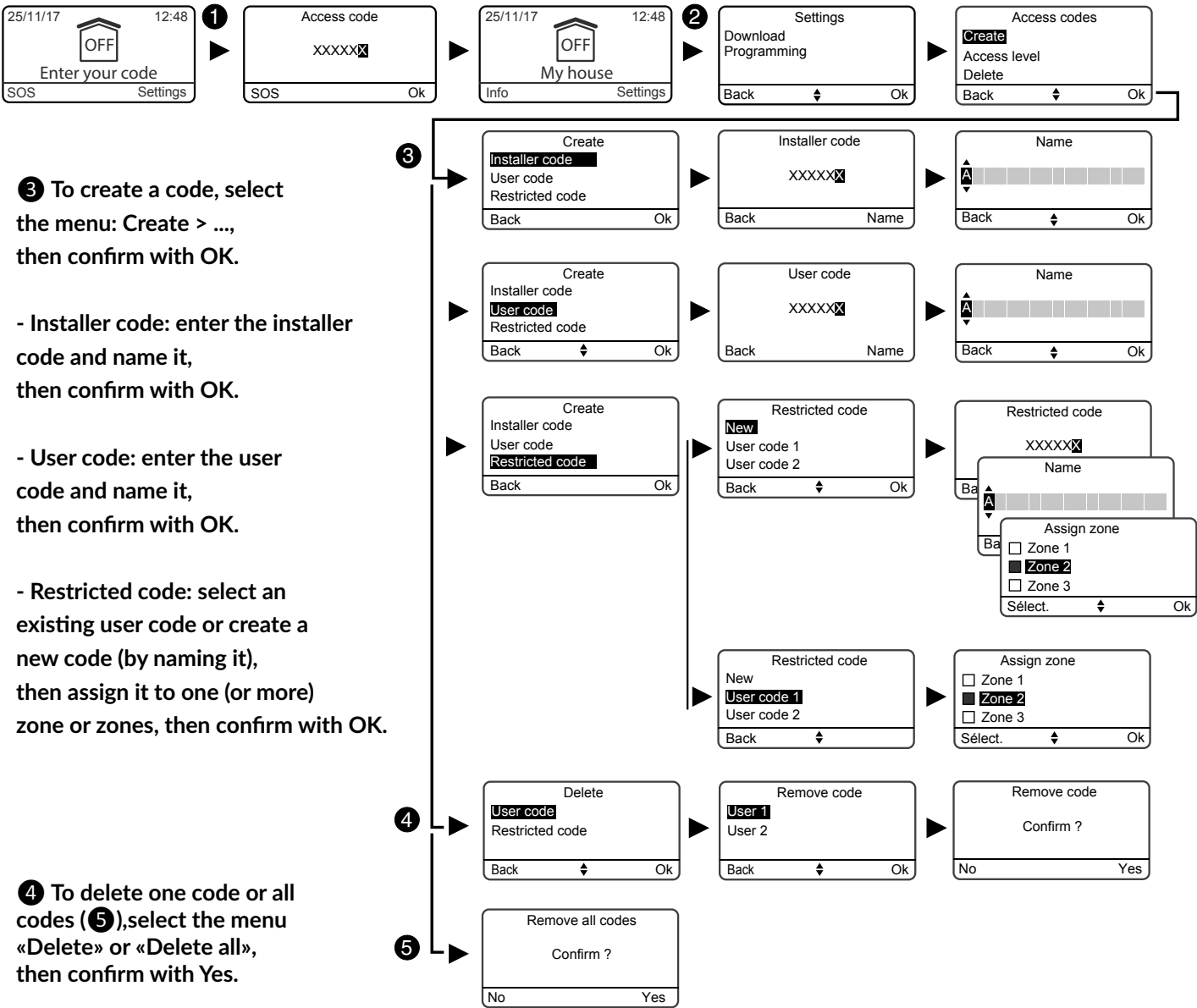
- The installer code enables all the control and configuration actions for the system. From the installer code, you can create or remove all codes (user and installer). It can shut down the system only if the system was activated by an installer code.
- The user code enables the control actions and a few configuration actions. There are 2 access levels «Simple» and «Advanced» (see table below).
- Restricted code: a user code can be of the restricted type, that is to say that it only gives access to the ON and OFF commands of the zones with which it is associated (e.g. maintenance personnel, delivery, etc.).
- Zones must have previously been created to create restricted codes.
- With the «Delete all» menu, all the «user» codes are deleted and the «installer» code is set to its default value (123456).
- To modify a «user» code from the installer code, you must first delete, then recreate it.

Wrong code entered: The keypad is locked for 90 seconds after five attempts to enter the wrong code. If there are many attempts to enter a wrong code (21 maximum), an alarm cycle will be triggered.

Possible actions	Simple user code	Advanced user code
Language selection	X	X
Clock setting (date, time, etc.)	X	X
Download	X	X
Programming		X
Changing/naming a user access code	X	X
Activating/Deactivating a product	X	X
Naming a product	X	X
Changing sound levels		X
Setting the brightness of the CLT8000 screen	X	X
Setting the brightness of the CLT8000 buttons	X	X
Activating/deactivating the beeps of the CLT8000 buttons	X	X
Naming the zones	X	X
Programming the call numbers		X
Incoming calls (dual call/number of rings)	X	X
SMS alert to relatives	X	X
SIM card (PIN/PUK codes)		X
Activating/deactivating the auto attendant (transmitter)	X	X

• from the installer code

- 1 Enter the installer code (123456, by default) and confirm with OK.
- 2 Press Settings, select the menu: Access code, then confirm with OK.



4

Adding additional products (if necessary)

Products that are not part of the TYXAL+ Access Pack must be associated with the system:

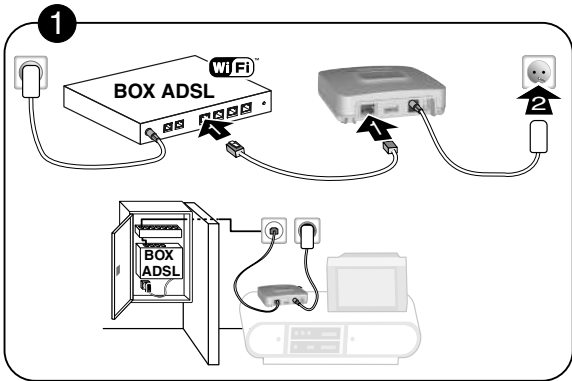
- intruder detectors and technical detectors,
- keypad, badge reader, remote controls, etc.,
- indoor siren, telephone transmitter, etc.,

To do this, refer to the «Adding products» chapter of the system guide.

Example: a connected home hub TYDOM I.O

• TYDOM I.O installation

1 Connect your TYDOM 1.0 depending on your system



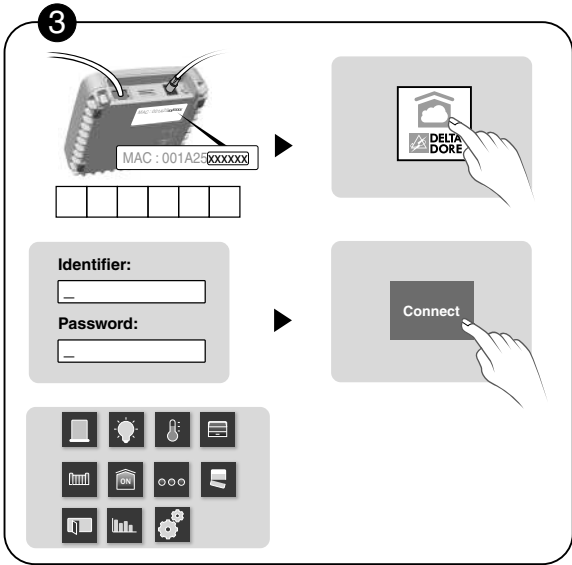
2 Download the TYDOM application

- Depending on your device: Connect to Google play or App Store
- Find and download the free 'TYDOM' application
- Activate the WIFI connection on your smartphone or tablet.



3 Configuring the TYDOM application

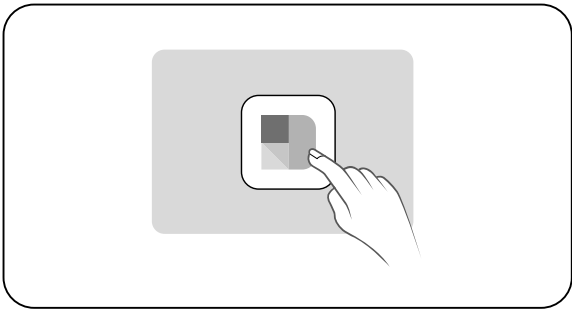
- You will need the last 6 characters of the MAC address of your TYDOM 1.0.
- Open the TYDOM application.
- Enter the 6 characters (upper case) in the 'login' field, then enter your password (minimum 8 alphanumeric characters).
- Press the 'Connect' button.
- The home screen appears.



You are now connected.

• Add your telephone/tablet to the alarm system

Run the TYDOM application and follow the instructions.



• TYDOM I.O LEDs ?

Information and support

LED	System status
Pulsing green	System accessible locally and remotely, user connected
Green on and steady	System accessible locally and remotely
Pulsing orange	System accessible locally, user connected
Orange on and steady	System accessible locally
Red on and steady	No IP address allocated

Diagnostic function

Briefly press the button
(LED displays for 10 seconds)

Flashing yellow	Fixed IP OK
Flashing blue	DHCP OK / Upnp OK
Flashing blue (2x)	DHCP OK / Upnp Error Check the Upnp activation on the BOX
Flashing blue (3x)	DHCP in progress Check the DHCP activation on the BOX
Flashing red	No network connection Check the Ethernet link



Advanced functions

Fixed IP -> DHCP Press the button for at least 3 seconds	
LED	Action
Flashing magenta (slowly)	Release the button (before 15 seconds)

Preferably use the TYDOM application to access this function.

Delete password Press the button for at least 15 seconds	
LED	Action
Flashing magenta (rapidly)	Release the button (before 30 seconds)

RESET Press the button for at least 30 seconds	
LED	Action
System status	Release the button → Use of DHCP → Password deletion → Association removal

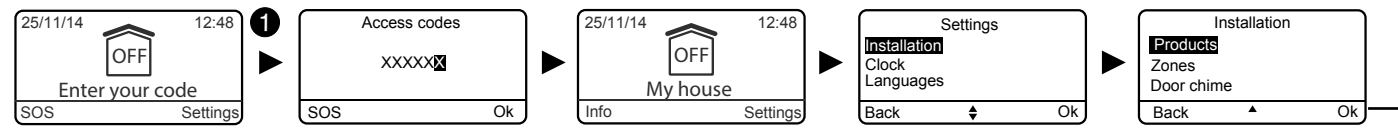
5 Personalising the installation and the products

The CLT 8000 TYXAL+ touch screen keypad allows all the personalisation operations of the system.
The following menus can be accessed by the installer code.
The CLT 8000 TYXAL+ touch screen keypad can be used for all activation actions.
Deactivate the tamper alarm (see § Deactivating the tamper alarm, system guide) and separate it from its wall mount.

Example: DMB TYXAL+ motion detector

• Name the products

- 1 Enter the installer code (123456, by default) and confirm with OK.



- 2 Press **Settings**, select the menu: **Installation > Products > Configure**, then confirm with OK.

- 3 Press the button of the product to rename or select it from the list of products by clicking on **"Browse"** (see table below), then confirm with OK.

- 4 Once the product is identified, select the **"Name"** menu, then confirm with OK.

- 5 You can choose a name from the list (recommended), then a number (optional) or personalise (6) the product name by entering a new name. Confirm with OK.

• Entry timer on intrusion detectors (immediate/delayed triggering)

Immediate: if a presence is detected, the alarm is immediately triggered.

Delayed: if a presence is detected, the alarm is triggered after a delay (set from 5 to 45 seconds) to give the user time to deactivate the alarm, after entering the building (e.g. activation or deactivation with a wall-mounted touch screen keypad). During this time, the alarm control unit emits warning beeps.

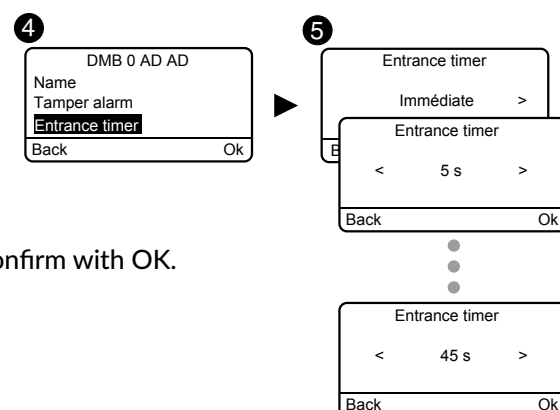
- 1 Enter the installer code (123456, by default) and confirm with OK.

- 2 Press **Settings**, select the menu: **Installation > Products > Configure**, then confirm with OK.

- 3 Press the button of the product to change or select it from the list of products by clicking on **"Browse"**, then confirm with OK.

- 4 Once the product is identified, select the **"Entry timer"** menu, then confirm with OK.

- 5 Select the type of triggering: immediate or delayed (5 to 45 seconds), then confirm with OK.



6 Testing the installation

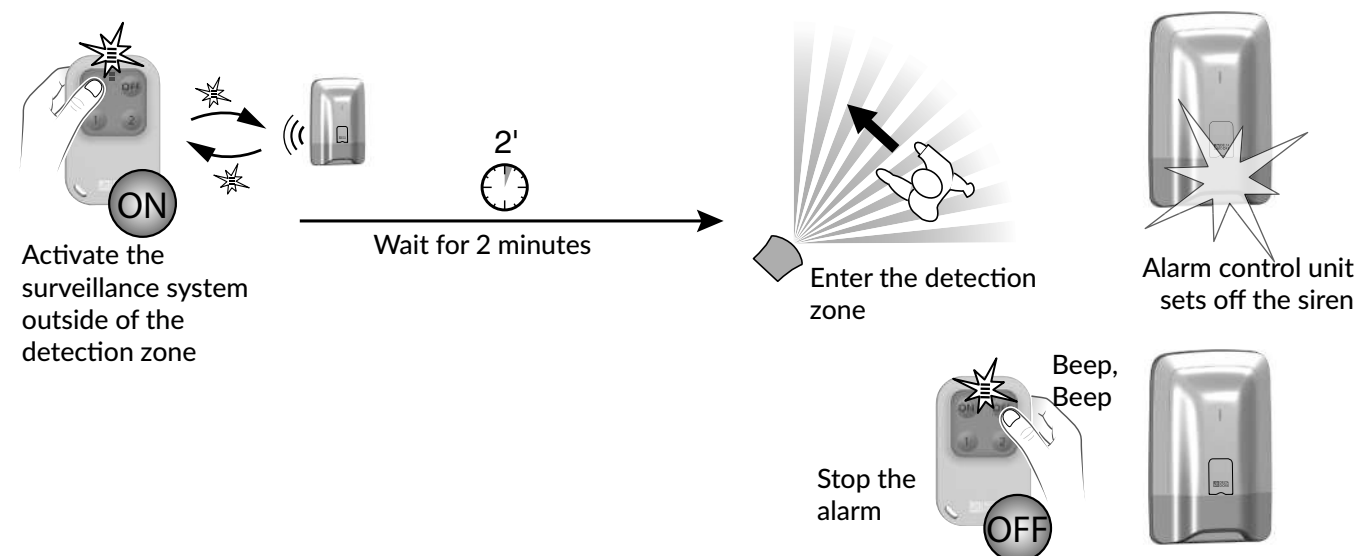
Test under operating conditions

Test your installation under actual operating conditions by triggering an alarm with each of your detectors.
During this test, you must take the "exit timer" into account to achieve effective surveillance (up to 90 seconds).

Test the motion detectors

The motion detector stores each passage in the detection zone for 90 seconds (whether or not the system is on).
For the test, enable the surveillance from a point where you will not be detected.
Wait for 2 minutes before entering the detection zone (irrespective of the exit timer).

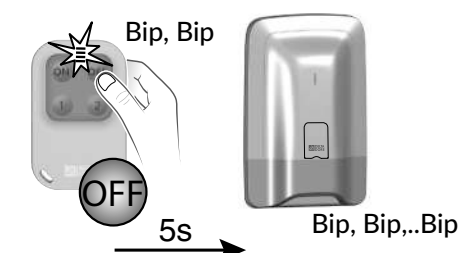
- If the detector is in delayed triggering mode, the control unit will only set off the alarm after a programmed time (up to 45 seconds). During this time, it will emit warning beeps.
- If the alarm control unit does not sound, take another look at the installation or association of the detector.
- If the installation is equipped with a transmitter, check that the detection triggers a call cycle to the programmed numbers.



Whenever the system is activated or deactivated, the alarm control unit sends a series of beeps indicating that an event (motion detection in this case) has occurred. You can view this on a touch screen keypad.

To clear the event:

Press and hold the remote control's OFF button for 5 seconds.
The control unit emits beeps when pressed, then a series of beeps after 5 seconds.
Release.
The event is cleared.



7 Technical Characteristics

Siren alarm control unit CS 2000 TYXAL+

- Power supplied by: two 3,6V / 26 Ah lithium batteries
- Class III insulation
- Stand-by consumption: 10 µA max. / Average consumption in transmission mode: 25 mA max. / Average consumption in alarm mode: 1,4 A max.
- 10-year life under normal use. Low battery voltage: < 2,7 V
- 868,7 -> 869,2 MHz and 868 -> 868,6 MHz transmission frequencies
- Wireless range from 100 to 300 metres outside, varies depending on the associated equipment (the range can vary depending on the installation conditions and the electromagnetic environment)
- Wireless alarm equipment
- Environmental class I
- 1.000.000 possible codes
- Maximum number of associated products: 16
- Number of events recorded: 1250
- Sound level at 1 m: 109 dBA +/-2
- Tamper alarm on opening and dislodging
- Indoor use only
- Degree of protection: IP40 - IK06
- Operating temperature: +5°C to +40°C
- Storage temperature: -10°C to +70°C
- Humidity range: 75%
- Dimensions: 176 x 268,5 x 59,5 mm
- Weight (with battery): 900 grams.
- Maximum radio power < 10 mW
- Receiver category II

Wireless touch screen keypad CLT 8000 TYXAL+

- Power supplied by: three LS14500 - 3,6V / 7,8 Ah lithium batteries
- Class III insulation
- Stand-by consumption: <10 µA max.
- Average consumption in transmission mode: 120 mA max.
- 10-year life under normal use.
- 868,7 -> 869,2 MHz and 868 -> 868,6 MHz MHz transmission frequencies
- Wireless range from 100 to 300 metres outside, varies depending on the associated equipment (the range can vary depending on the installation conditions and the electromagnetic environment)
- Wireless alarm equipment
- Environmental class 2
- Tamper alarm on opening and dislodging
- Indoor use only
- Degree of protection: IP31 - IK06
- Operating temperature: -10°C to +55°C
- Storage temperature: -10°C to +70°C
- Humidity range: 75%
- Dimensions: 89 x 168 x 28 mm
- Weight (with battery): 270 grams.
- Maximum radio power < 10 mW
- Receiver category II

Wireless door/window magnetic contacts DO TYXAL+

- Power supplied by: one LS 14500 - 3,6V lithium batteries
- Class III insulation
- Stand-by consumption: 5 µA max.
- Average consumption in transmission mode: 26 mA max.
- 10-year life under normal use.
- 868,7 -> 869,2 MHz and 868 -> 868,6 MHz MHz transmission frequencies
- Wireless range from 100 to 300 metres outside, varies depending on the associated equipment (the range can vary depending on the installation conditions and the electromagnetic environment)
- Wireless alarm equipment
- Environmental class 2
- Tamper alarm on opening and dislodging
- Degree of protection: IP30 - IK04
- Operating temperature: -10°C to +55°C
- Storage temperature: -10°C to +70°C
- Humidity range: 75%
- Dimensions:
For fixed part 20,5 x 98,3 x 24,5 mm,
For moving part 12 x 98,3 x 24,5 mm
- Weight (with battery): 66 grams.
- Maximum radio power < 10 mW
- Receiver category II

Wireless dual lens motion detector DMB TYXAL+

- Power supplied by: one LS 17500 - 3,6V lithium batteries
- Class III insulation
- Stand-by consumption: 5 µA max.
- Average consumption in transmission mode: 26 mA max.
- 10-year life under normal use.
- 868,7 -> 869,2 MHz and 868 -> 868,6 MHz MHz transmission frequencies
- Wireless range from 100 to 300 metres outside, varies depending on the associated equipment (the range can vary depending on the installation conditions and the electromagnetic environment)
- Wireless alarm equipment
- Environmental class 2
- Tamper alarm on opening and dislodging
- Degree of protection: IP30 - IK04
- Operating temperature: -10°C to +55°C
- Storage temperature: -10°C to +70°C
- Humidity range: 75%
- Dimensions: 67,8 x 77,3 x 45,3 mm
- Weight (with battery): 90 grams.
- Maximum radio power < 10 mW
- Receiver category II

Wireless remote control for alarms and/or control systems TL 2000 TYXAL+

- Power supplied by: one CR2430 - 3V lithium batteries
- Class III insulation
- Stand-by consumption: 0,6 µA max. / Average consumption in transmission mode: 23 mA max.
- 10-year life under normal use.
- 868,7 -> 869,2 MHz and 868 -> 868,6 MHz MHz transmission frequencies
- Wireless range from 100 to 300 metres outside, varies depending on the associated equipment (the range can vary depending on the installation conditions and the electromagnetic environment)
- Wireless alarm equipment
- Environmental class 2
- Degree of protection: IP32
- Operating temperature: -10°C to +55°C
- Storage temperature: -10°C to +70°C
- Humidity range: 75%
- Dimensions: 42 x 65 x 8 mm
- Weight (with battery): 25 grams.
- Maximum radio power < 10 mW
- Receiver category II

TYDOM I.O (connected home hub) - Optional

- Adaptor power supply: Input 100-240V~, 50-60 Hz, 0,3 A;
Output 5V=, 1A
- Class II insulation
- 868,7 -> 869,2 MHz transmission frequency
- Wireless range from 100 to 300 metres outside, varies depending on the associated equipment (the range can vary depending on the installation conditions and the electromagnetic environment)
- Degree of protection: IP30 - IK04
- Operating temperature: -10°C to +40°C
- Storage temperature: -20°C to +70°C
- Dimensions: 100 x 100 x 30 mm
- Weight (with battery): 472 grams.
- Maximum radio power < 10 mW
- Receiver category II

8 Overview of your installation

Activation date:

Name and stamp of installer:

Items of the pack:

Type	Name	No. or name of zone	Immediate/delayed triggering	Comment (e.g. location)
Example: <i>Motion detector</i>	<i>DMB 0 01 02 or Corridor 1</i>	<i>Zone 1 or Home</i>	<i>Delayed (30 s)</i>	<i>Ground floor corridor</i>
Control unit				
Touch screen keypad				
Remote controls				
« « «				
Motion detectors				
« « «				

Additional items:

Type	Name	No. or name of zone	Immediate/delayed triggering	Comment (e.g. location)

Notes:
.....
.....
.....
.....
.....
.....
.....

