

TYXIA 5640

EN Lighting dimmer receiver



Technical characteristics

- Power supply : 230 V~ 0,26 VA
- Stand-by consumption : 0,13 W
- Number of associated transmitters: 16 maximum
- Storage temperature: -10°C/+70°C
- Operating temperature: -10°C/+40°C
- IP 40 (flush mounting box)
- Dimensions: 41 x 36 x 14.5 mm
- X3D wireless remote control device: 868.7 MHz to 869.2 MHz
- Receiver category: 2



Compatibility

230 V ~ 50 Hz					
①	②	③	④	⑤	⑥
150 W	100 W	100 W	150 W		

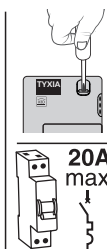
- ① 230 V halogen or 230 V incandescent bulbs.
- ② 230V energy-saving compact fluorescent bulbs.
- ③ 230V LED bulbs.
- ④ Very low voltage 12V halogen or LED bulbs with AC or DC electronic transformer.
- ⑤ Very low voltage 12V halogen bulbs with ferromagnetic or toroidal transformer.
- ⑥ Fluorescent tube.

Do not connect different types of loads to the same output.

EN Recommendations

IMPORTANT: the control wires are not insulated from the mains power supply. All connected equipment must be marked CE and meet the requirements of the low voltage devices as well as assembly recommendations.

Local control wires can be extended up to 10 m (separate from the 230 V).



Use an electrically isolated tool to perform the actions on the receiver configuration button.

20A max.

20A max. circuit breaker required.

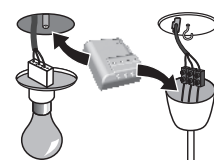
I - Installation



Switch off the installation power supply

The lighting receiver can be installed either in a flush-mount housing behind a push button or behind a ceiling.

Do not switch on the receiver before connecting the load. To obtain uniform operation, it is mandatory to connect identical load models on the output.



1.1 Connection instructions for terminals 1 2 3 4.

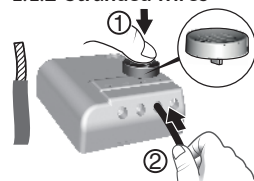
- Strip the wires while respecting the strip length specified on the product.
- Push the wire fully into the terminal.

Ø 0,75 - 1,5 mm²

1.1.1 Solid wires



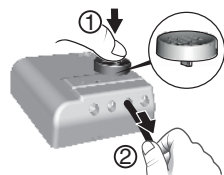
1.1.2 Stranded wires



Using the tool supplied or a 2.5 mm screwdriver, press the terminal button then insert the wire.

Removal recommendations

- Switch off the power supply.
- Use the tool supplied or a 2.5 mm screwdriver to press the button of the front terminal before removing the wire.



1.2 Connection instructions for

IN1 - COM - IN2 terminals

- Use the wires supplied.
- Push the wire fully into the terminal.

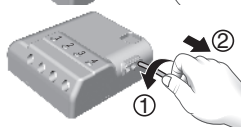


Do not strip the wires when they are connected to the product as you could damage the internal connector.

Removal recommendations

Turn the wire while pulling on it.

7mm
0,5 mm²
KY31A02



1.3 Connection

Connect:

- The light to terminals 3 and 4.

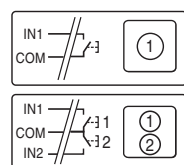
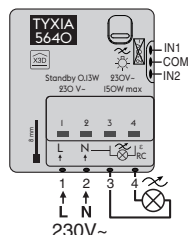
- A simple push button: at the IN1 - COM terminals.

or

- A double push button:

at the IN1 - COM - IN2 terminals.

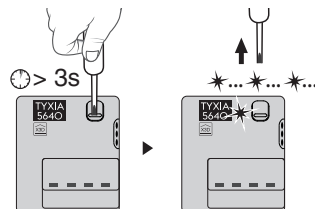
- The 230 V power supply to terminals 1 and 2.



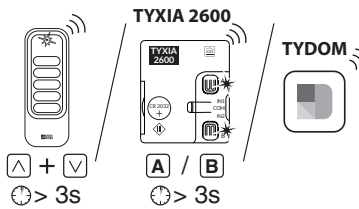
Switch the installation power back on to continue with the association operation.

2 - Association

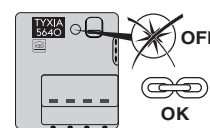
- ① Press and hold the receiver button for 3 seconds until the LED flashes, release.



- ② On the transmitter: - Send the association command (Refer to the user guide).



- ③ When the receiver LED has stopped flashing. The products are now associated.



3 - Operation

3.1 Simple push-button

You have 2 modes to choose from:

- **Mode 1.** On/Off + dimming from 0% to 100% with storage of the latest intermediary level. (by default).

- **When the lighting is off:**

Briefly press the control button to switch the lighting to the stored level.

After releasing:

- A short press under 5 seconds switches the lighting level to 100%.
- Pressing and holding before 5 seconds increases the lighting.
- A short press after 5 seconds switches the lighting level to 0%.
- Pressing and holding after 5 seconds dims the lighting.

- **When the lighting is on:**

- A short press switches the lighting level to 0%.
- Pressing and holding dims the lighting. Release. Pressing and holding again before 5 seconds dims the lighting, after 5 seconds, the lighting increases.

- **Mode 2.** On/Off + dimming from 0% to 100% without storage of the intermediary level.

- **When the lighting is off:**

- A short press changes the lighting level from 0% to 100%.
- Pressing and holding increases the lighting.

- **When the lighting is on:**

- A short press switches the lighting level to 0%.
- Pressing and holding dims the lighting. Release. Pressing and holding again before 5 seconds dims the lighting, after 5 seconds, the lighting increases.

3.2 Double push-button



Button 1

Press once briefly: ON
Press and hold: Dimming up

Button 2

Press once briefly: OFF
Press and hold: Dimming down

3.3 Simple/Double push-button

- **Storage of the intermediary level:**

Hold down the push button until the required level: the lighting intensity varies. Release when the required level is reached. The intermediary level is stored

3.4 To change to a different operating mode:

- Hold down the receiver button for 6 seconds.
- After 3 seconds, the LED flashes slowly.
- After 6 seconds, the LED is on without flashing. Release. The LED flashes.
- Press the button briefly to toggle between modes.

Mode 1 : 1 flash, Mode 2 : 2 flashes.

Validation of the mode: Press the receiver button for 3 seconds until the LED stops flashing.

4 - Setup

Dimming range Min. Max. values

Setting minimum and maximum values for the dimming range is automatic when the receiver is on. If you want to modify these settings manually, or if the automatic setting is not optimum, perform the following actions: Hold down the button for 6 seconds.

- After 3 seconds, the LED flashes slowly.
- After 6 seconds, the LED is on without flashing. Release. The LED flashes.
- Briefly press the button to select the setting. Repeat this procedure for each setting.

- 3 flashes: Setting the minimum dimming value:

Press and hold the push button of the local hard-wired control, adjust the minimum value. Save the setting by pressing the receiver button for 3 seconds until its LED lights up.

- 4 flashes: Setting the maximum dimming value:

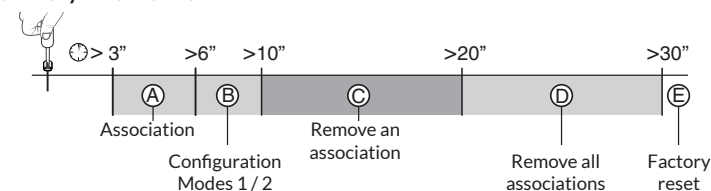
Press and hold the push button of the local hard-wired control, adjust the maximum value. Save the setting by pressing the receiver button for 3 seconds until its LED lights up.

- 5 flashes: Back to automatic dimming range setup.

Press the receiver button for 3 seconds until the LED lights up to confirm the setting and run the automatic dimming range setup.

5 - Help

Summary of functions:



Ⓐ Association

Press the button for 3 seconds until the LED flashes. Release

Ⓑ Modes 1 / 2

Hold down the button for 6 seconds.

- After 3 seconds, the LED flashes slowly.
- After 6 seconds, the LED is on without flashing. Release. The LED flashes (once or twice depending on the mode).
- Briefly press the button to move on to the next setting.
- Press the button for 3 seconds to confirm.

Ⓒ Remove an association

① Hold down the button for 10 seconds:

- After 3 seconds, the LED flashes slowly.
- After 6 seconds, the LED is on without flashing.
- After 10 seconds, the LED will blink fast. Release.

② Confirm on the transmitter (refer to the user guide).

- Make sure that the dimmer module LED has stopped flashing. The products are no longer associated.

Ⓓ Remove all associations

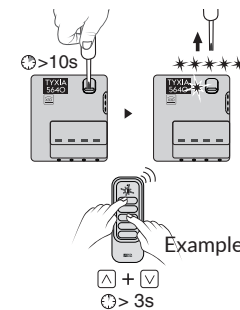
Hold down the button for 20 seconds:

- After 3 seconds, the LED flashes slowly.
- After 6 seconds, the LED is on without flashing.
- After 10 seconds, the LED will blink fast.
- Press and hold the button until the LED goes out. Release.

Ⓔ Factory reset

Hold down the button for 30 seconds:

- After 30 seconds, the LED flashes, then goes off.
- The dimmer module is blank and the wireless link and operating mode are reset (mode 1 by default).



i An additional user guide is available on the TYXIA 5640 page of the DELTA DORE website. www.deltadore.com