

TYXIA I700

EN Remote control for lighting and roller shutters



Technical characteristics

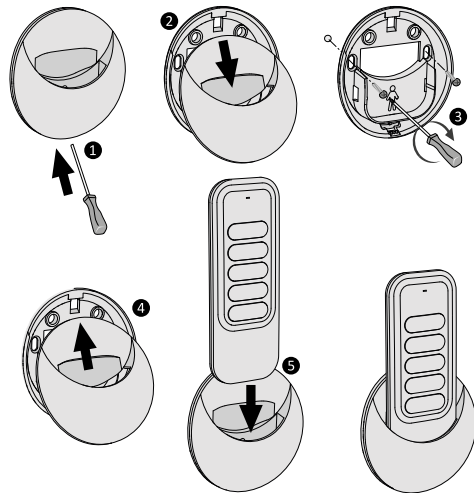
- Power supplied by 3V lithium battery, CR2430
- Class III insulation
- X3D Transmission frequency:
868.7 MHz to 869.2 MHz
- Maximum radio power < 10 mW
- Receiver category II
- Wireless range: 100 to 300 metres outside,
variable depending on the associated equipment
(the range can vary depending on the installation
conditions and the electromagnetic environment)
- Mounted on a base
- Dimensions: 46 x 121 x 10.7 mm
- Degree of protection: IP 40
- Operating temperature: 0 to +55°C
- Storage temperature: -10 to +70°C
- Installation in an environment with normal
pollution levels

Contents

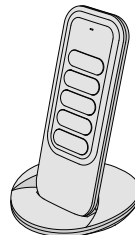
1/ Location/Mounting	4
1.1 Mounted on the wall	4
1.2 Placed on a flat surface	5
2/ Wireless association	6
3/ Use	8
4/ Troubleshooting	9

1/ Location/Mounting

1.1 Mounted on the wall



1.2 Placed on a flat surface



EN

2/ Wireless association

To associate a control channel (1 to 5) with one or more X3D wireless motor(s), X3D roller shutter receiver(s) or X3D lighting receiver(s).

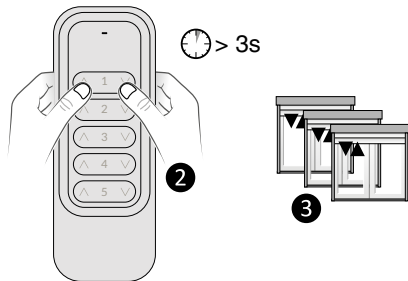
You can associate up to 16 receivers per channel.

- 1 Set all the motors or receivers to be associated to association standby mode.
- 2 On the remote control (channel 1 to 5), press \wedge and \vee at the same time and hold for 3 seconds, until the LED flashes. Release.
When receiver is found, the LED lights up green briefly.
- 3 After a few seconds, the roller shutters (or lights) turn on briefly when they are associated.

The association mode is automatically exited

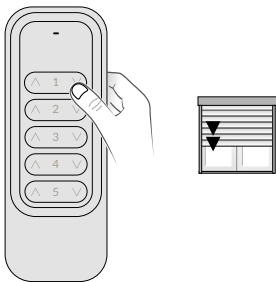
1 Activating association standby mode

- Motor: from a remote control used for the motor (already associated) press the \bigcirc button for 3 seconds.
- Receiver: press its button for 3 seconds until the LED flashes.



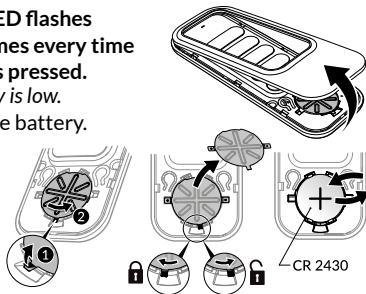
3/ Use

Press \wedge or \vee to control the light(s) or roller shutter(s) for the selected channel.
The LED changes from red to green if the receiver has correctly received the information.



4/ Troubleshooting

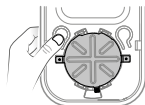
- **The red LED flashes several times every time a button is pressed.**
The battery is low.
Change the battery.



- **Remove an association**

- Remove the front face of the remote control.
- Press button A.

- The red LED flashes.*
- Press the \wedge and \vee buttons at the same time and hold for 3 seconds.
- Press button A to exit.





www.deltadore.com



2704636 Rev.03